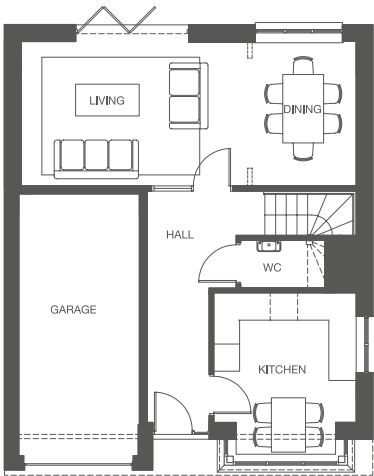
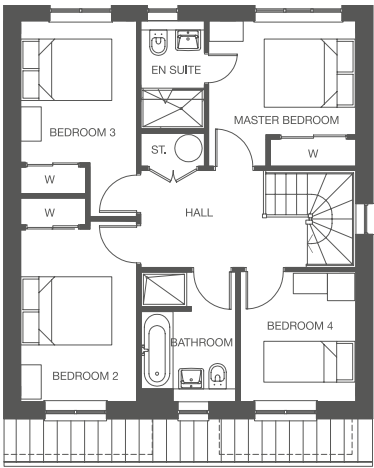




External finishes may vary



GROUND FLOOR	Imperial	Metric
Garage	8'8" x 18'8"	2650 x 5750
Living/Dining	24'1" x 10'4"	7360 x 3170
Kitchen	10'3" x 11'6"	3140 x 3535
WC	6'1" x 3'4"	1870 x 1045



FIRST FLOOR	Imperial	Metric
Bedroom 1	10'5" x 10'6"	3200 x 3235
Ensuite	4'6" x 7'8"	1400 x 2380
Bedroom 2	8'4" x 13'0"	2550 x 3800
Bedroom 3	8'4" x 10'3"	2550 x 3120
Bedroom 4	8'3" x 9'4"	2540 x 2860
Bathroom	6'8" x 9'4"	2080 x 2855

TOTAL INTERNAL AREA (EXCLUDING GARAGE) 1187ft<sup>2</sup> 110.3m<sup>2</sup>

We have endeavoured to portray a reasonable account of the properties we are planning to build. Circumstances may force us to change certain issues and therefore we would advise you to discuss with your Sales Executive at each stage of the process. All facts, photographs and illustrations used in our marketing literature are intended to reasonably convey the lifestyle offered by an Ambassador home. External finish, appearance and elevational issues may differ from those photographed or illustrated in each home. Floor plans are as accurate as can be at time of printing. Please be aware that individual construction may result in a slight variance. Please note that the interior design, furnishings and some fittings and finishings that make up our showhome are not part of our standard specification. This does not form part of a contract or a warranty.